

Département du VAR
Commune de SIX-FOURS Les Plages

Immeuble " Les Nuraghes "

Plan d'intérieur
et des façades

Lieu-dit	Les Lânes
Section	CB
Numéro	121

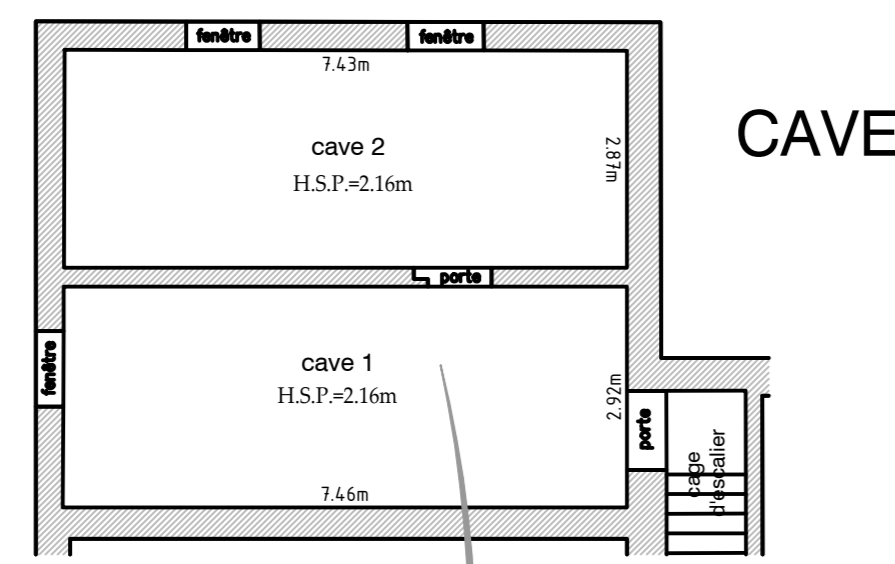
Le Nivellement est rattaché en I.G.N. 69

Date : 15 Septembre 2006.

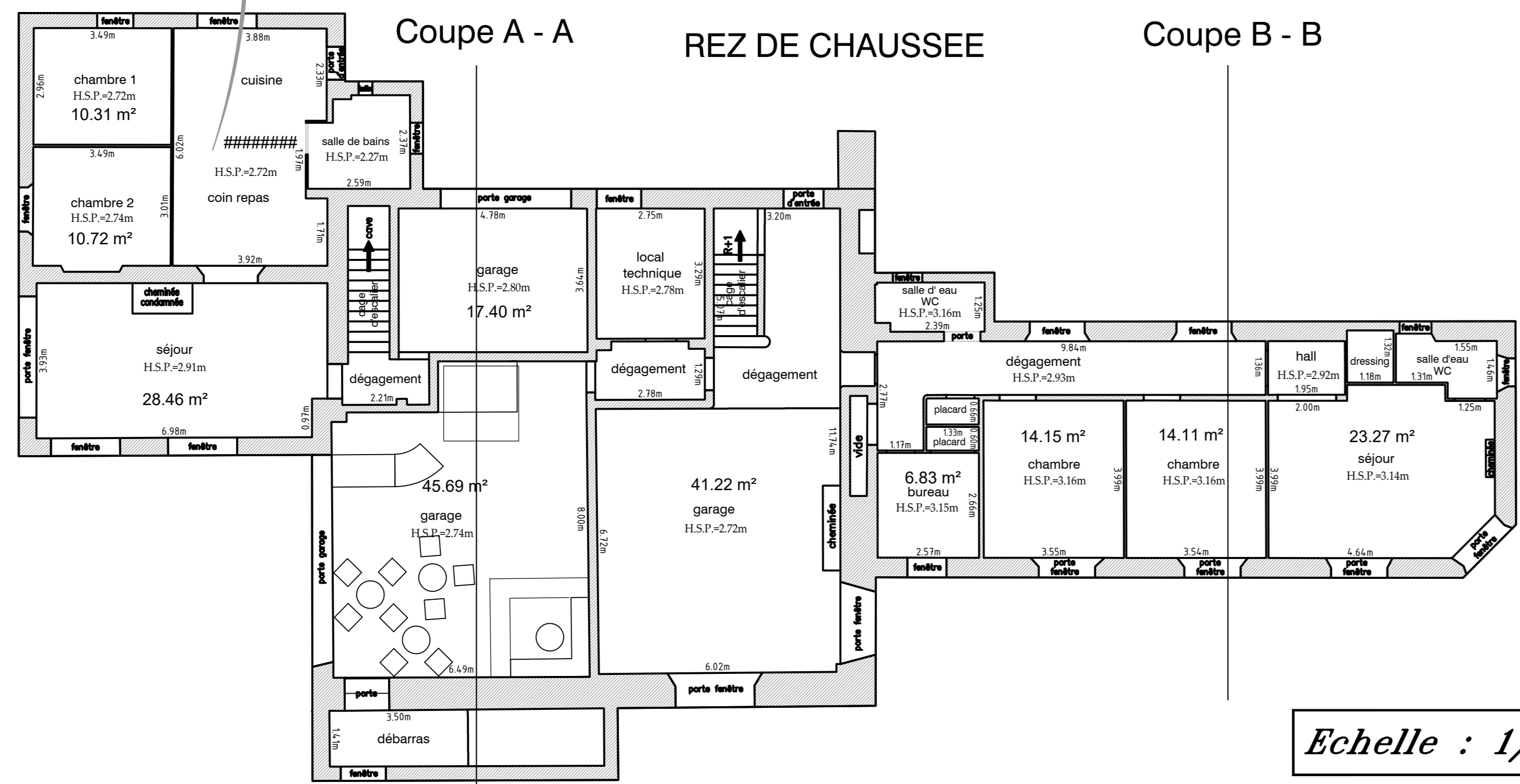
Cabinet SURPLY & SCHNEIDER - Géomètres Experts D.P.L.G.
Villa "Sainte Marie" 1630 Avenue de la Mer 83140 SIX-FOURS les Plages
Tél. : 04 94 34 81 82 ; Fax : 04 94 07 64 14 ; http : //surply.dataflow.fr
E-mail : jm.surply@dataflow.fr ; thierry.schneider@dataflow.fr

D 6704

JM6704-F DWG (V2006)



CAVE

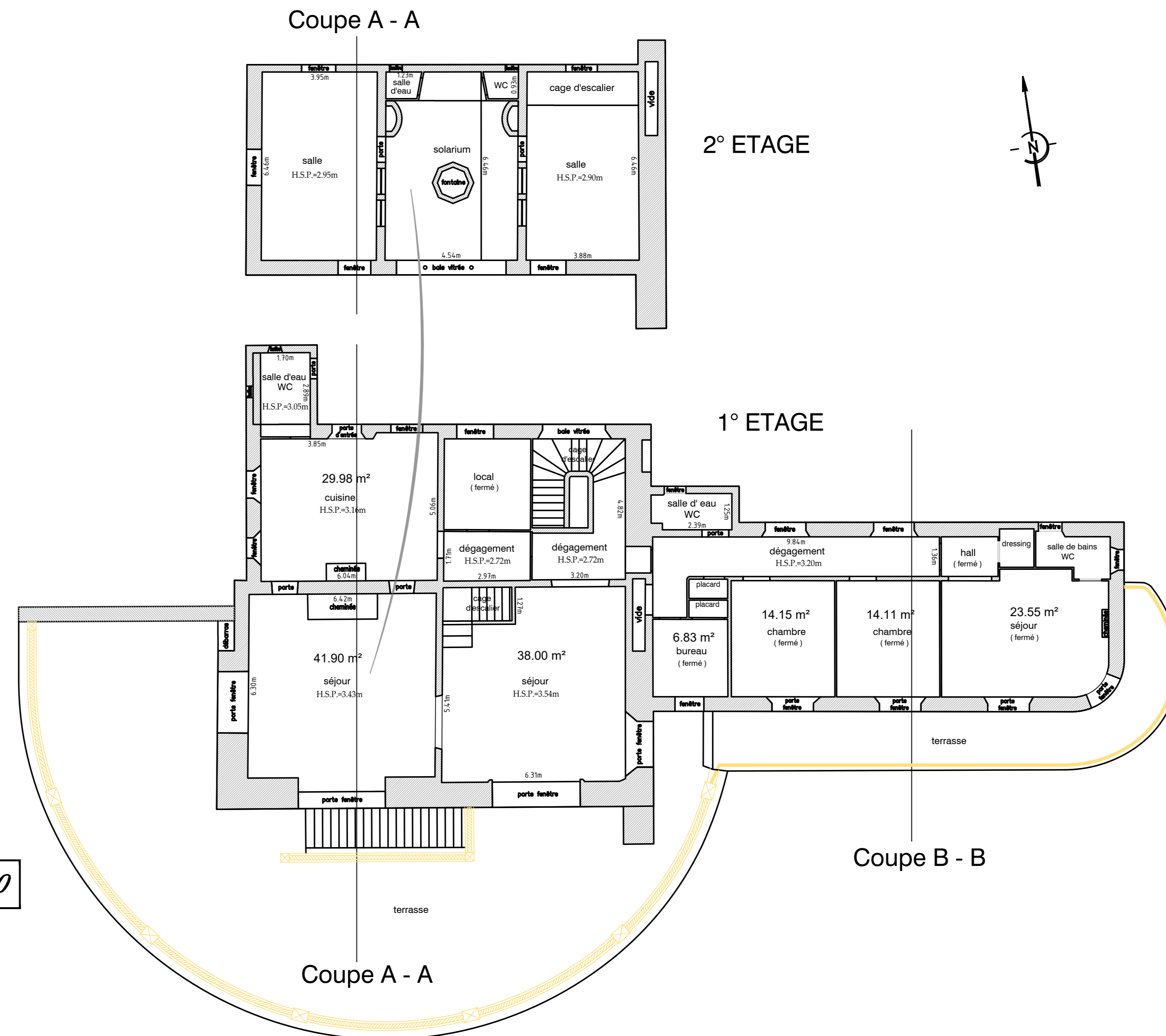


Coupe A - A

REZ DE CHAUSSEE

Coupe B - B

Echelle : 1/100



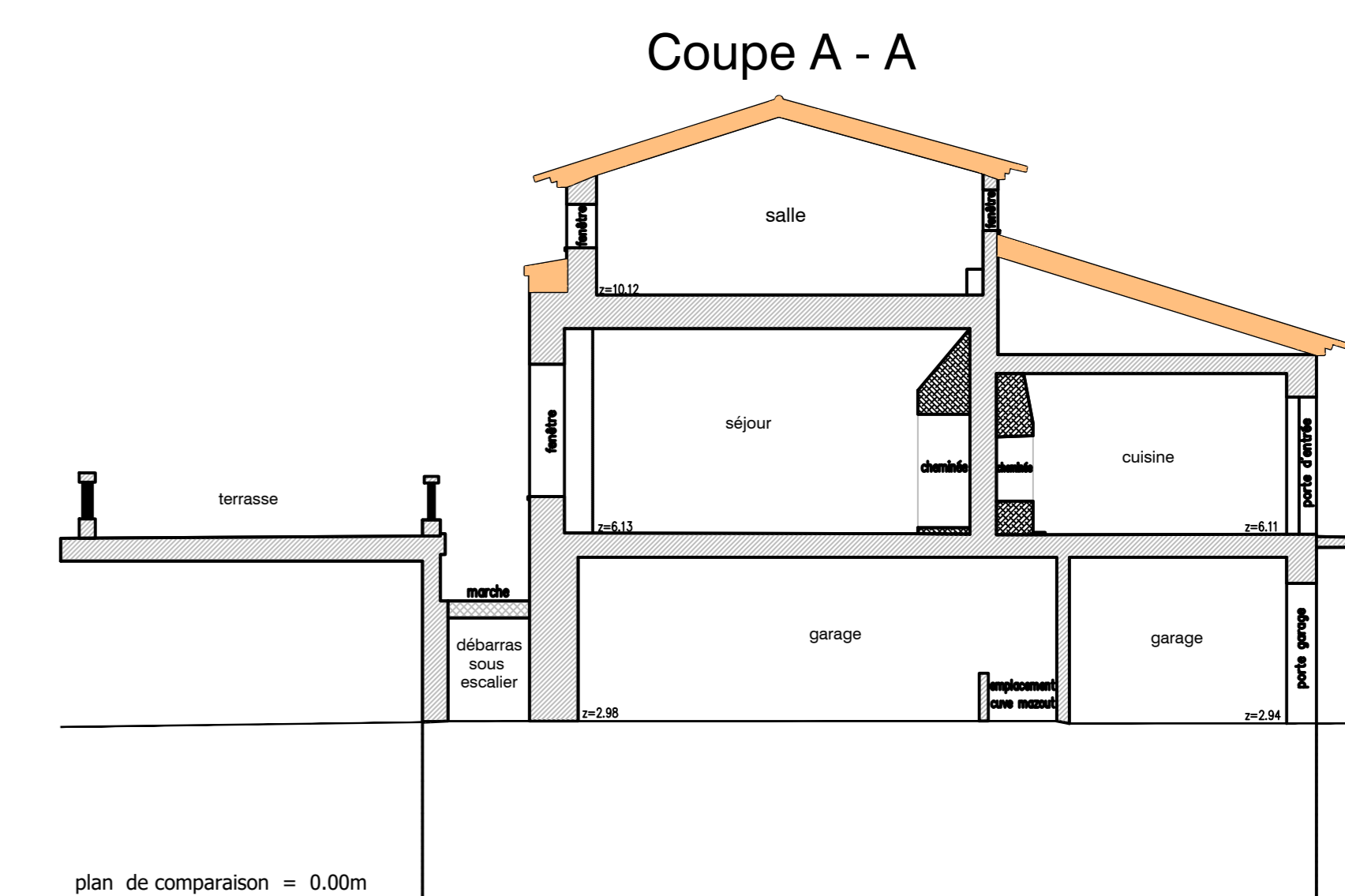
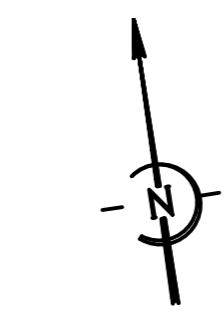
Coupe A - A

2° ETAGE

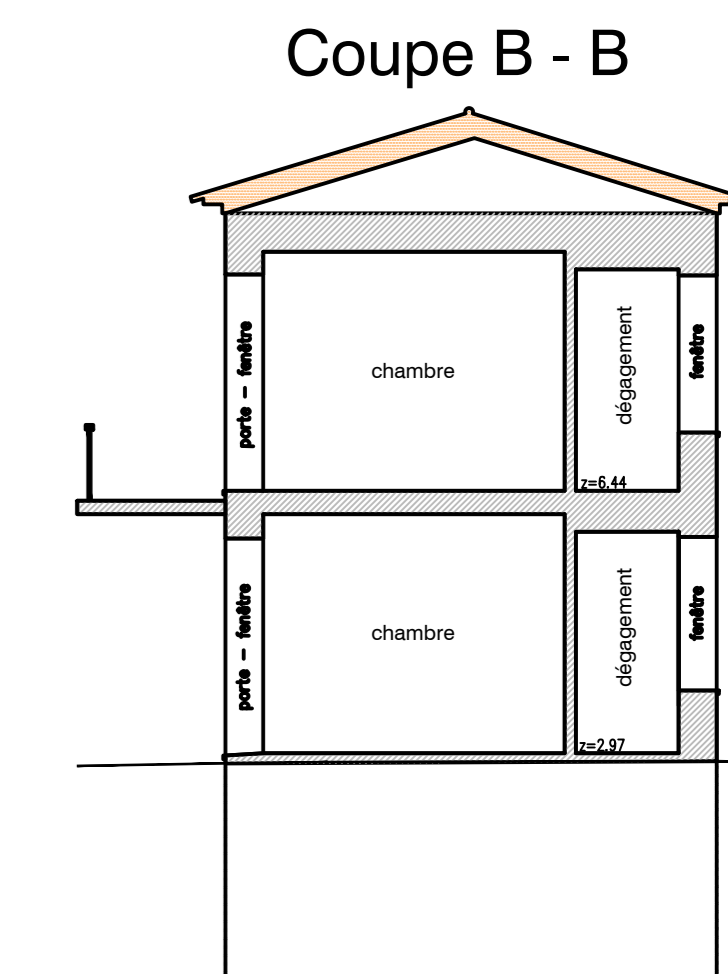
1° ETAGE

Coupe B - B

Coupe A - A



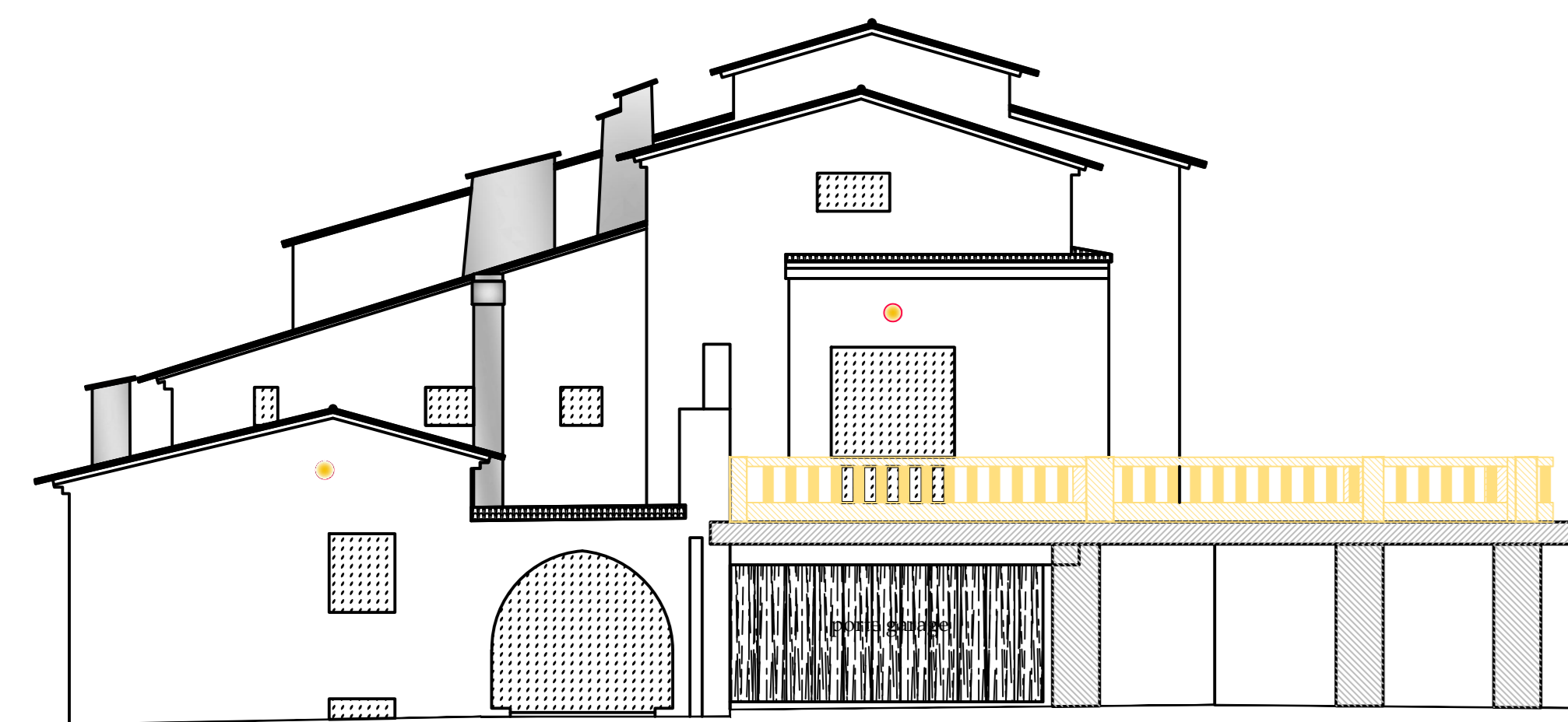
Coupe A - A



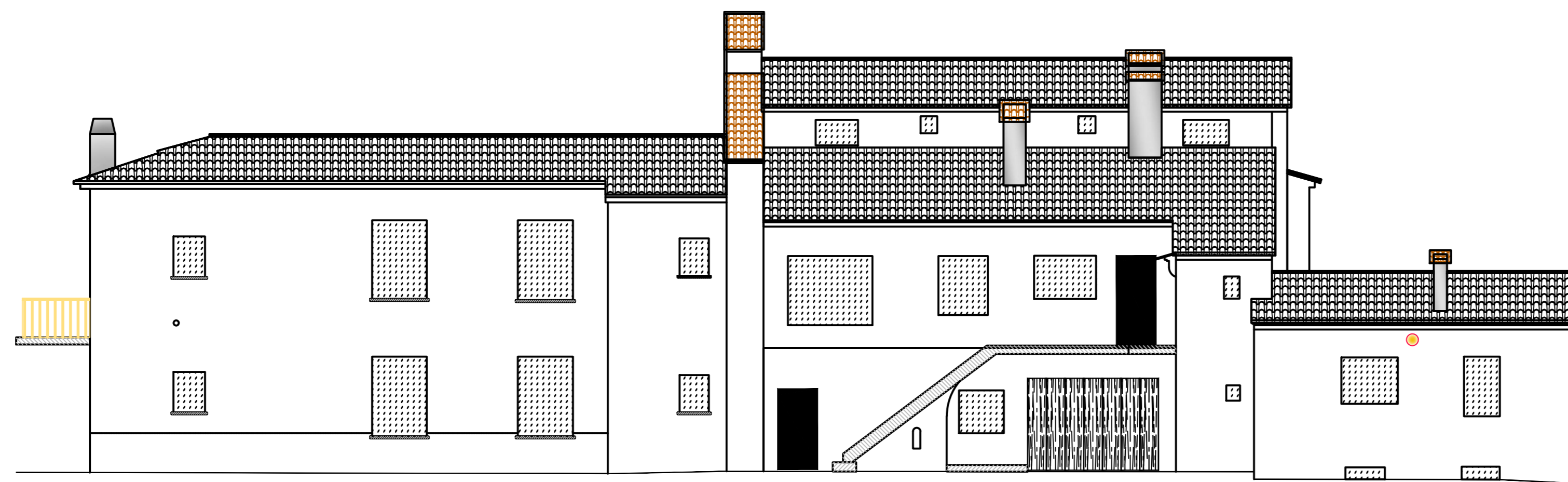
Coupe B - B

plan de comparaison = 0.00m

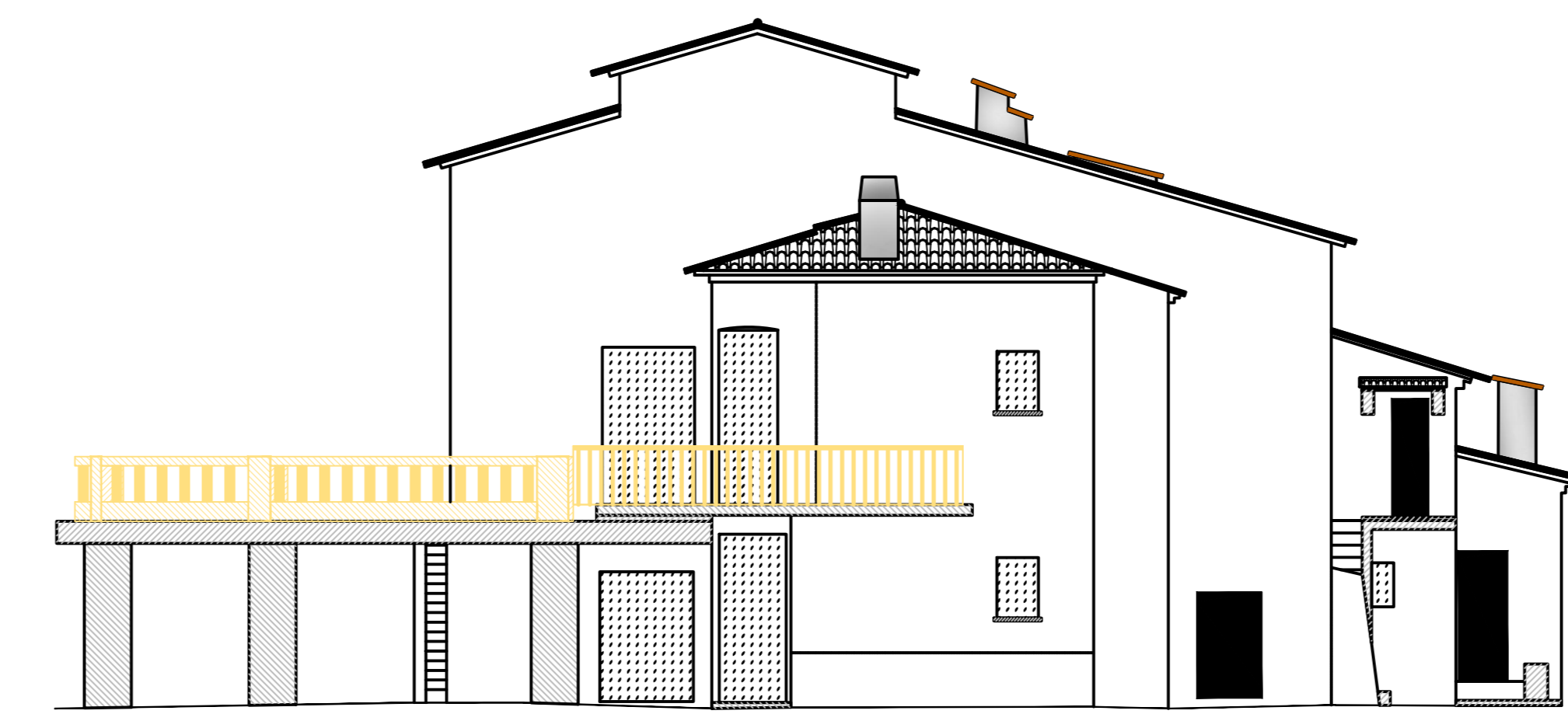
Echelle : 1/100



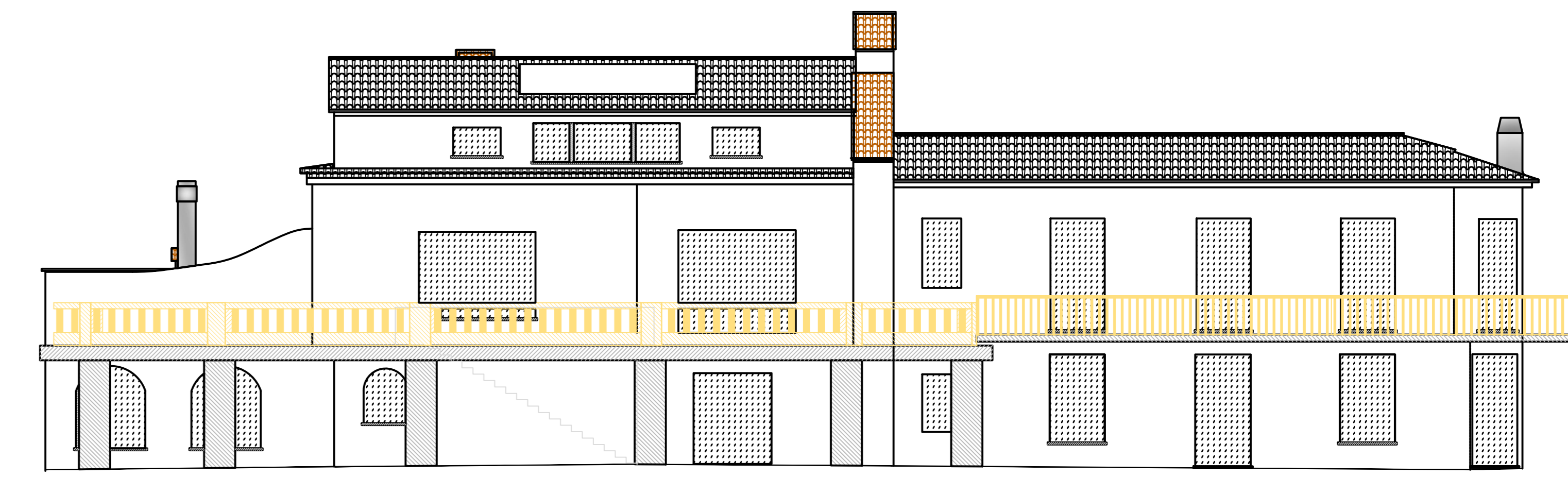
FAÇADE OUEST



FAÇADE NORD



FAÇADE EST



FAÇADE SUD

plan de comparaison = 0.00m

Echelle : 1/100